



Waldegrave Road, SE19 | £300,000

020 8702 9333

crystalpalace@pedderproperty.com

pedder
We live local



In General

- First floor period conversion
- No onward chain
- A share of the freehold
- Light and bright accommodation
- Sought after location

In Detail

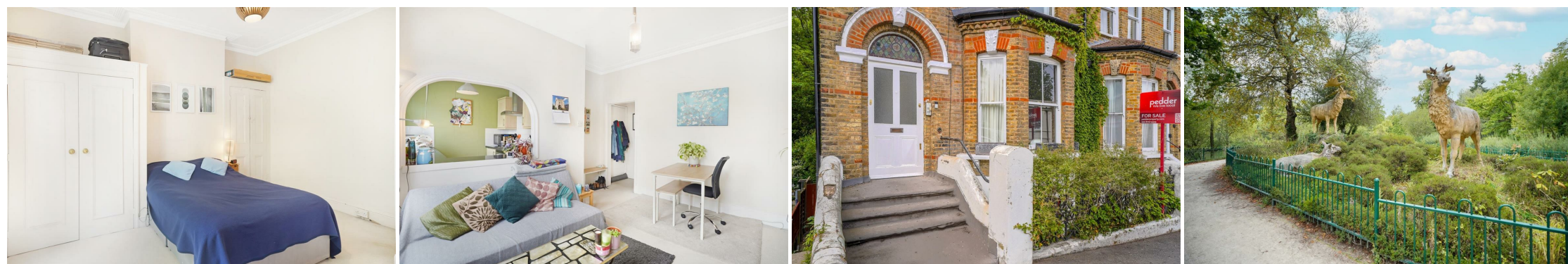
A light and bright one bedroom first floor period conversion positioned on a highly popular road nearby Crystal Palace station and the park.

The property forms part of an attractive brick-fronted building and features a sunny reception room with large windows and a southerly aspect and a feature fireplace - a pleasant space to relax. The kitchen partially open-plan which is good for sociable entertaining and features ample work space for food prep. The bedroom is at the rear of the building and is generously proportioned, boasting fitted storage and access to the bathroom.

Further benefits include no onward chain and a share of the freehold.

Waldegrave road is a quiet residential street predominantly made up of period properties and enables ease of access to a wealth of shopping and leisure options at the vibrant Triangle and Anerley Parade Excellent rail links to central and East London are easily nearby, plus 200 acres of historic parkland which is currently undergoing a huge restoration and refurbishment plan.

EPC: D | Council Tax Band: B | Lease: TBC Years remaining | SC: Nil | GR: Nil | BI: £750pa




Floorplan

Waldegrave Road, SE19

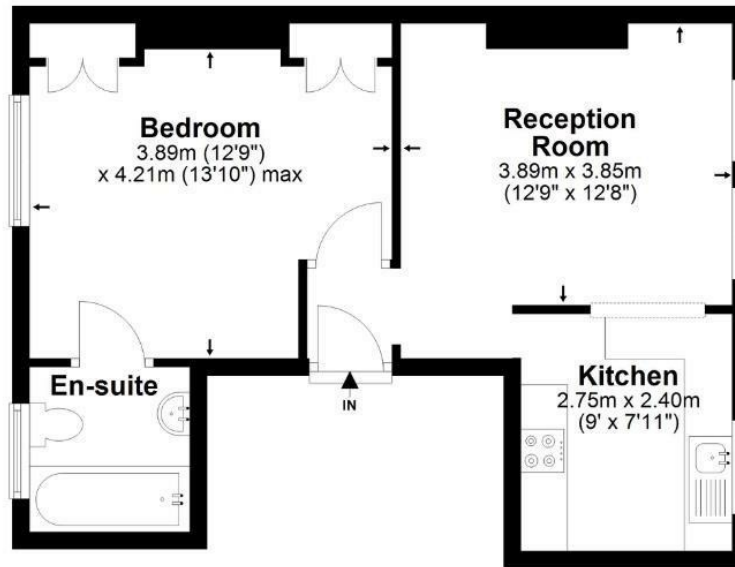
Total* = 40.9 sq. m / 440.3 sq. ft

First Floor = 40.9 sq. m / 440.3 sq. ft

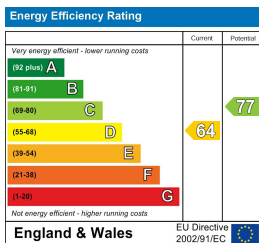
 = Reduced head room below 1.5m



First Floor



*All measurements are approximate and do not include eaves space. The plans are for representation purposes only as defined by RICS - 'Code of Measurement Practice'. The plans are not to scale. Please personally check all sizes, dimensions, shapes and compass bearings before making any decisions reliant upon them. Copyright The Pedder Group © 2026.



Pedder Property Ltd trading as Pedder for themselves and for the vendor/landlord of this property whose agents they are, give notice that (1) these particulars do not constitute any part of an offer or contract, (2) all statements contained within these particulars are made without responsibility on the part of Pedder or the vendor/landlord, (3) whilst made in good faith, none of the statements contained within these particulars are to be relied upon as a statement of representation or fact, (4) any intending purchaser/tenant must satisfy him/herself by inspection or otherwise as to the correctness of each of the statements contained within these particulars, (5) the vendor/landlord does not make or give either Pedder or any person in their employment any authority to make or give representation or warranty whatsoever in relation to this property.